

VERSATILE

EFFICIENT

COSY

DIGITAL

**BAU**

**NEW PRODUCTS  
AND FEATURES**

**2019**

SAFE

SMART

ELEGANT

FUNCTIONAL

**HÖRMANN**

VERSATILE



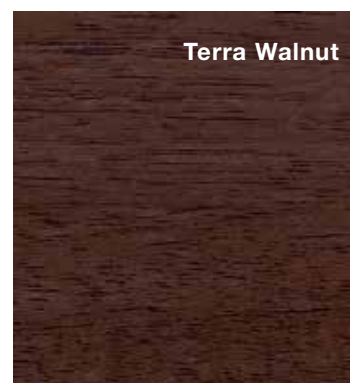
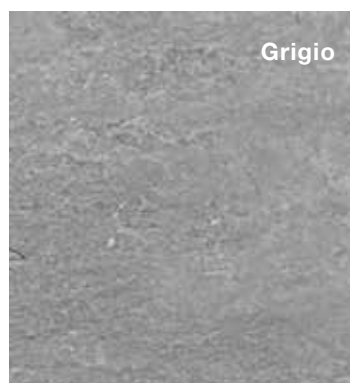
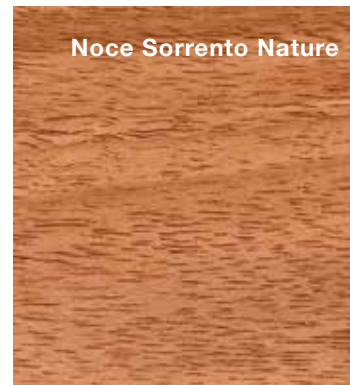
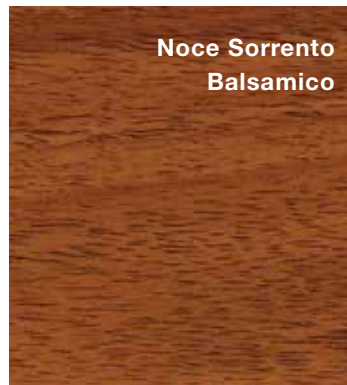
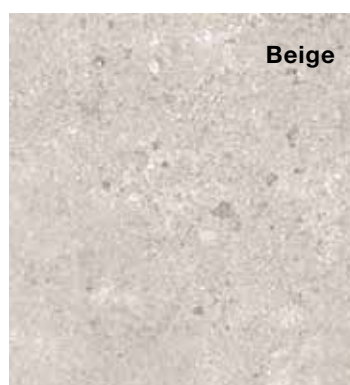
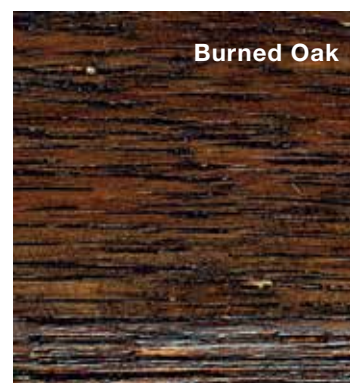
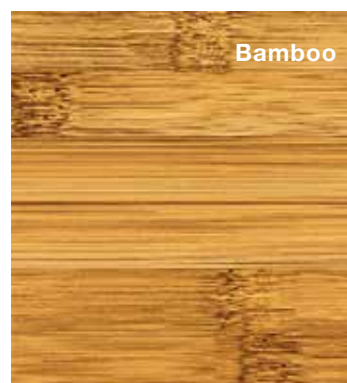
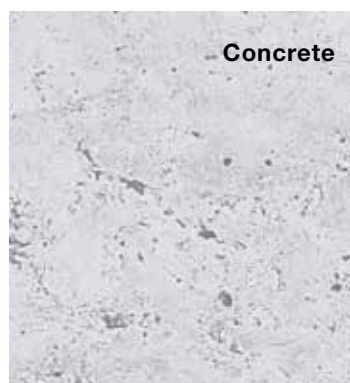




# 24 Duragrain decors

- Innovative digital printing technique
- True-to-detail, natural and colourfast door surface finish for every style house
- Permanently beautiful door appearance thanks to final coating with high-resistance protective paint
- Optional lintel and frame fascias in a colour matching the decor
- Same price as Decograin surface finish

■ Available from 1.3.2019



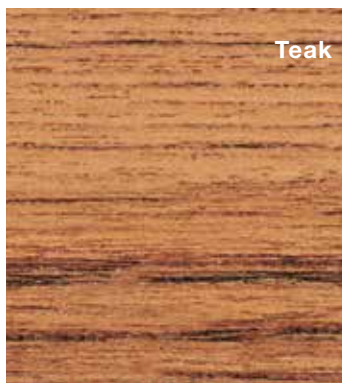
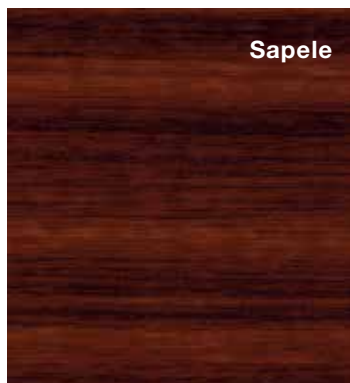
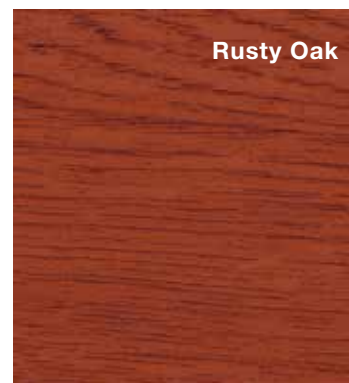
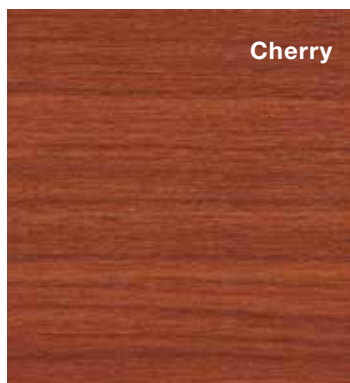




## Door leaf design

- 1 42-mm-thick, double-skinned LPU steel sections with PU infill
- 2 Surface hot-galvanized on the interior and exterior
- 3 Sections primed on the interior and exterior in Grey white, RAL 9002
- 4 UV-resistant decor printing on the coating of the outside of the sections ensures a natural, colourfast decor appearance
- 5 Scratch-resistant Duragrain final coating permanently protects the decor exterior from effects of the environment, helping the door remain beautiful for many years

\* The complete warranty conditions can be found at: [www.hoermann.com](http://www.hoermann.com)



# Smooth surface finish Planar

- Classic, ultra elegant surface finish
- 6 exclusive colours Matt deluxe
- For campaign door RenoMatic, L-ribbed
- Especially attractive price
- In the 13 most common door sizes

■ Available from 1.3.2019

# Colour Matt deluxe



CH 9016 Matt deluxe,  
Traffic white



CH 9006 Matt deluxe,  
White aluminium



CH 9007 Matt deluxe,  
Grey aluminium



CH 703 Matt deluxe,  
Anthracite Metallic



CH 7016 Matt deluxe,  
Anthracite grey



CH 8028 Matt deluxe,  
Terra brown

Exclusively for campaign  
door RenoMatic, L-ribbed







1

## LPU 42 Premium 1

- For an exclusive interior door appearance
- Fittings, frames, tracks and connection rails in Grey white RAL 9002 (matching the inside of sections)
- Tandem track rollers for very quiet and gentle door travel

\* Galvanized spring assembly incl. holder, spring safety device, cable drum, operator boom

■ Available from 1.3.2019



2

## Real glazing 2

- Optional triple-pane glazing, clear, for design styles 461 and 481

■ Available from 1.3.2019



3

## Stainless steel design elements “numbers and words”

- For all sectional garage doors with ribbing
- Two fonts: Modern 3 and Classic
- Positive with cut-out numbers or letters (individually on the door), character height 80 mm for S-, M-, L-, D- and T-ribbed doors, Character height 150 mm for M-, L-, D- and T-ribbed doors
- Negative with numbers and letters (sheet with cut-out numbers and words on the door), character height 80 mm, sheet height 150 mm, for M-, L-, D- and T-ribbed doors

■ Available from 1.3.2019



4

## Brushed timber surface finish 4

- Natural door appearance matching the timber framework or visible timber beams
- For all sectional garage doors LTH and side doors (except for panelled doors)

■ Available from 1.3.2019

# Aluminium frame door

- 11 infill variations for more light in the garage or improved ventilation for parking spots in collective garages
- Harmonious overall appearance with even distribution of the glazing frames **A** or optionally of the window sections **B**
- 42-mm-thick aluminium frame, coated in Traffic white RAL 9016 as standard
- Normal profile **1** or profile with thermal break **2** for improved thermal insulation
- 15 preferred colours or RAL to choose
- Also as side doors NT 60

■ Available from 1.3.2019





Overall harmonious appearance



Door version with evenly spaced sections

Door version with evenly spaced window sections

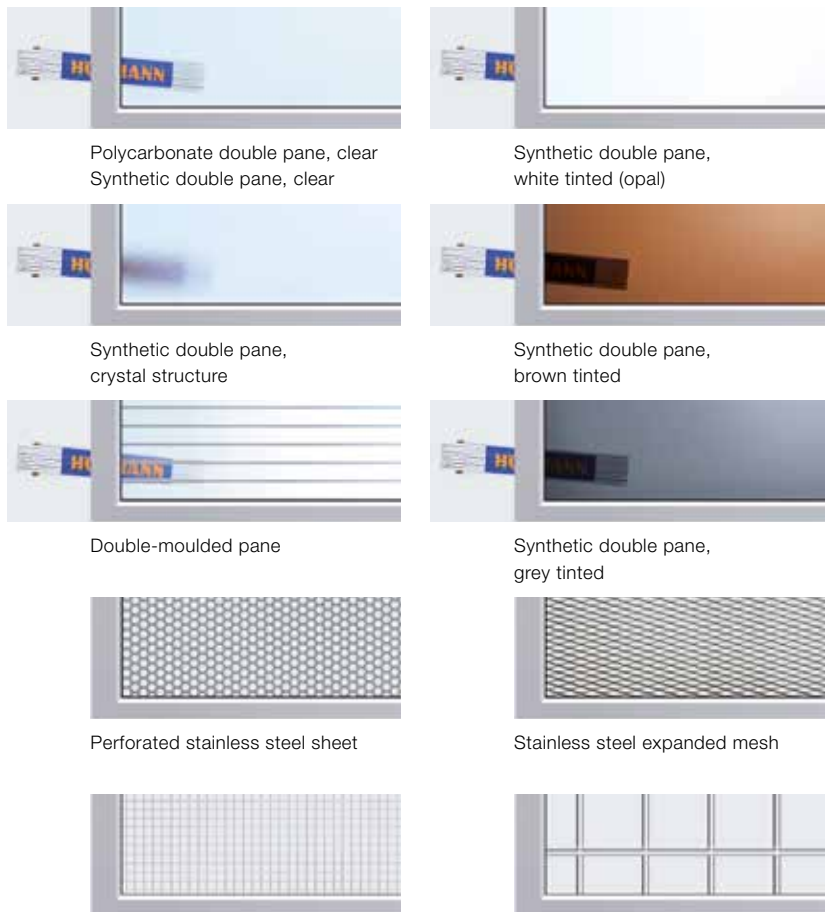
Profile versions



ART 42

ART 42 Thermo

Infill variations



Polycarbonate double pane, clear  
Synthetic double pane, clear

Synthetic double pane,  
white tinted (opal)

Synthetic double pane,  
crystal structure

Synthetic double pane,  
brown tinted

Double-moulded pane

Synthetic double pane,  
grey tinted

Perforated stainless steel sheet

Stainless steel expanded mesh

Crimped mesh

Welded grille

## Garage side doors NT 60

- Elegant door appearance with concealed hinges **1**
- For version with aluminium block frame

■ Available from 1.7.2019

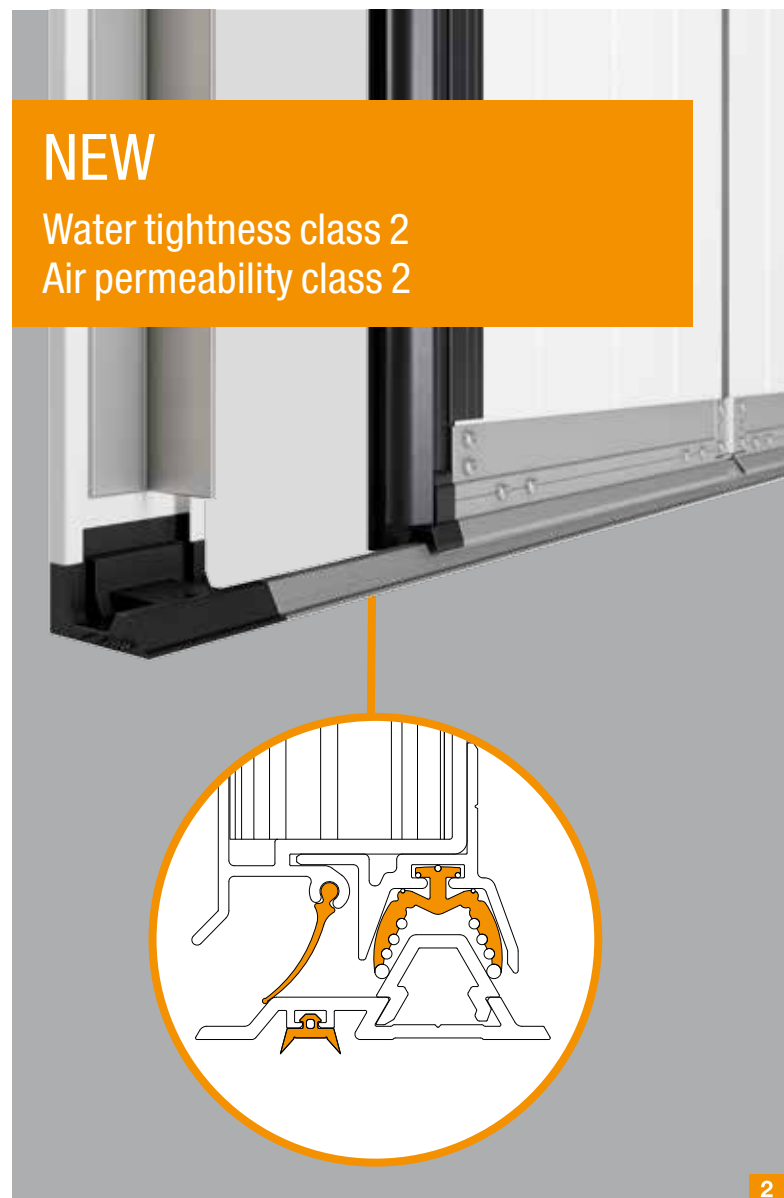
## Side sliding sectional door HST

- New floor rail as standard **2**
- New, continuous bottom seal
- Unobstructed entrance
- Improved water tightness from class 0 to class 2
- Improved air permeability from class 0 to class 2

■ Available from 1.3.2019



1



NEW

Water tightness class 2  
Air permeability class 2

2



### Hinged garage door DFT 42

- Double-leaf door with partial opening for easy access to the garage
  - External continuous hinge cover for reliable finger trap protection **3** for automatic doors
  - Manually operated door with secure locking system
  - Automatic door with operators SupraMatic 4 **4** and ProMatic 4 **4**
  - 60-mm-thick aluminium frame profiles and aluminium block frame
  - Insulated 42-mm-thick sections with Woodgrain, Sandgrain, Silkgrain or Decograin surface finish
- Manually operated hinged garage door: available from 1.3.2019  
■ Automatic hinged garage door: available from autumn 2019



GARAGE DOOR OPERATORS

HÖRMANN

SMART







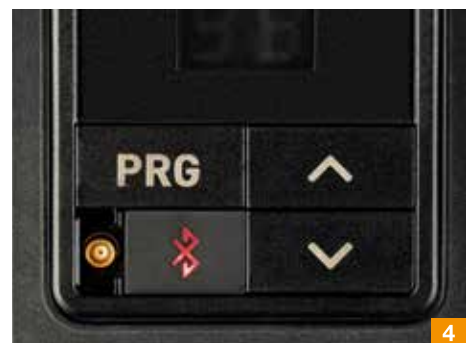
Bluetooth as standard



# SupraMatic 4

- Energy-efficient LED lighting for even garage illumination **1**
- Low power consumption in standby below 1 watt
- Direction of door movement indicated by chase (only SupraMatic P)
- Door opening up to 75 % faster (in comparison with ProMatic series 3)
- Third door position “ventilation position”<sup>\*\*</sup> without installing an additional safety photocell<sup>\*\*</sup> **2**
- Control element with 2x 7-segment display **3**
- Integrated Bluetooth receiver (can be switched on and off) for operating the operator using the Hörmann BlueSecur app on a smartphone (see pages 16 – 17) **4**
- Connection for optional Bluetooth antenna
- Larger and more convenient connection compartment with easy-to-reach connections **5**
- HCP interface for connecting accessories or external smarhome systems (see pages 18 – 19)

■ Available from 1.10.2019



Garage door operators	SupraMatic E	SupraMatic P
Special feature		For timber doors and doors with wicket doors
BlueSecur	Bluetooth integrated	Bluetooth integrated
Cycles per day / hour	25 / 10	50 / 10
Pull and push force	650 N	750 N
Peak force	800 N	1000 N
Max. opening speed	25 cm/s	25 cm/s
Max. door width	5500 mm	6000 mm
Max. door surface	13.75 m <sup>2</sup>	15 m <sup>2</sup>

\* In conjunction with a configured hinged roller holder

\*\* In conjunction with climatic sensor HKSI, UAP or connected smarhome systems



# ProMatic 4

- Energy-efficient LED lighting for even garage illumination **6**
- Low power consumption in standby below 1 watt
- Door opening up to 40 % faster (in comparison with ProMatic series 3)
- Third door position “ventilation position”\* without installing an additional safety photocell\*\* **7**
- Larger and more convenient connection compartment with easy-to-reach connections **8**
- HCP interface for connecting accessories or external smarthome systems (see pages 18 – 19)

■ Available from 1.10.2019



Garage door operators	ProMatic 4
Special feature	
BlueSecur	Via optional Bluetooth receiver HET-BLE
Cycles per day / hour	12 / 5
Pull and push force	600 N
Peak force	750 N
Max. opening speed	20 cm/s
Max. door width	5000 mm
Max. door surface	11.25 m <sup>2</sup>

\* In conjunction with a configured hinged roller holder

\*\* In conjunction with climatic sensor HKSI, UAP or connected smarthome systems

# Hörmann BlueSecur App



- Simple operation of garage and entrance gate operators as well as entrance door locks and internal door operators using a smartphone
- Easy-to-use interface
- Push notifications when receivers come into range on request
- Free download from the App Store or via Google Play
- Easy transmission of permanent and limited authorisations (user keys)

■ Available from 1.3.2019



\* In conjunction with an internal or external Hörmann Bluetooth receiver

The symbols show example applications\*.



Open garage door  
Close garage door  
Open garage door partially



Turn on operator light  
Turn off operator light



Open entrance gate  
Close entrance gate



Unlock / open door

The hand transmitter  
in the smartphone







## Easy installation

- Download the Hörmann BlueSecur app
- Scan the QR code for the operator or external receiver from the Hörmann BlueSecur card **1**
- Automatic transmission of control functions to the smartphone
- Individual settings for user's custom scope of functions

■ Available from 1.3.2019

## Convenient operation

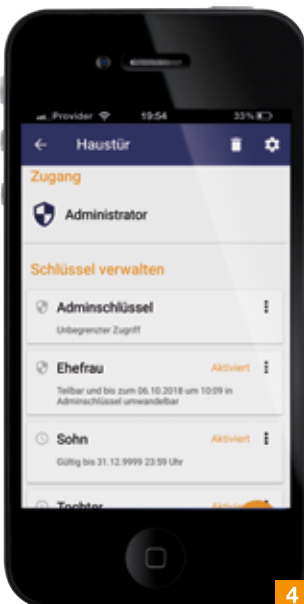
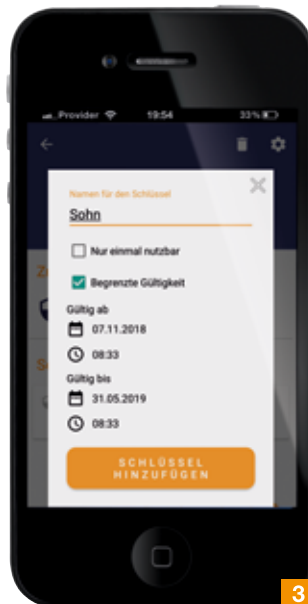
- Via smartphone, no hand transmitter or control element required
- Custom receiver and device names as well as control function names **2**
- Individual selection of control functions per receiver / operator

■ Available from 1.3.2019

## Individual user management

- One free user key included (with automatic admin function) **3**
- Additional permanent user keys for transfer to additional smartphones **4**
- Easy available via in-app purchases via App Store or Google Play **5**
- Small set of keys for €8.99 (1 admin or user key)
- Set of 5 keys for €34.99 (5 user keys)

■ Available from 1.3.2019



# HCP bus connection for external smarthome systems

- For operating garage door and entrance gate operators via existing smarthome systems via app with smartphone or tablet
- Connection of smarthome gateways from different providers via system cable
- Compatible with new garage door operator generation 4 and many current operators

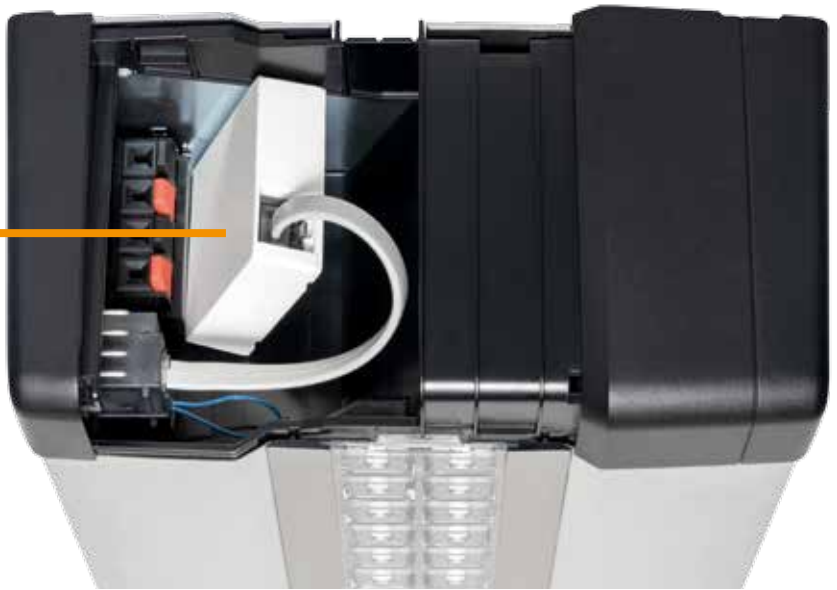
■ Available from 1.10.2019

Hörmann operators  
with compatible HCP bus

- Garage door operator SupraMatic
- Garage door operator ProMatic (from 1.10.2019)
- Hinged gate operator RotaMatic
- Hinged gate operator VersaMatic
- Sliding gate operator LineaMatic

For an exact list of compatible series, please visit [www.hoermann.co.uk](http://www.hoermann.co.uk)





**homematic** <sup>IP</sup>


Module with radio connection to the smarthome system



- Security
- Convenience
- Energy-saving
- Lighting
- Roller shutters
- Climate

**KNX**

Module with system cable to the smarthome system



- Intelligent building networking

**DELTA DORE**

Module with radio connection to the smarthome system




- Security
- Convenience
- Energy-saving
- Lighting
- Roller shutters

Works with **Apple HomeKit**

Support for HomeKit coming later in 2019

Internal push button module with WLAN connection to the Apple HomeKit system, button functions impulse, light and 2nd opening height



- Siri voice control
- Security
- Convenience
- Lighting



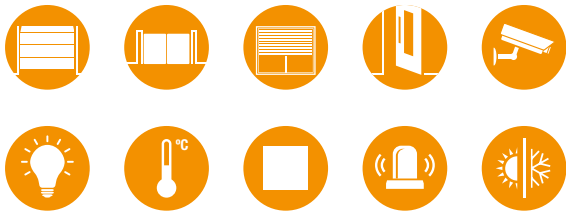
# Hörmann homee



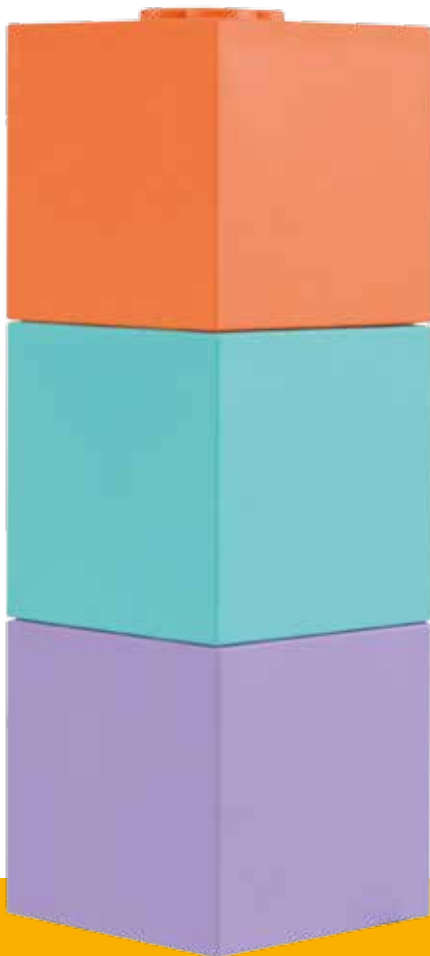
## The smart radio system

- Hörmann homee Brain basic cube with BiSecur radio system for operating Hörmann entrance gate operators, entrance gate operators, entrance door locks and electric devices with BiSecur receivers
- Control via free smartphone app in home network or worldwide online
- Clear navigation structure
- Simple installation in just a few steps
- Data saved locally
- Control of individual devices, device groups or using programmable “homeegram” scenarios with clearly separate tab navigation

■ Available from 1.10.2019



Each cube is responsible for another radio technology and can “talk” to other devices. The Hörmann homee Brain basic cube is the main unit and can be extended with new cubes and thus new possible radio technologies.



### ZigBee Kit

Compatible with smarthome systems: Philips Hue, OsramLightify, Bitron

### EnOcean Kit

Compatible with smarthome systems: AFRISO, Eltako

### Z-Wave Kit

Compatible with smarthome systems: Aeotec, Danfoss, Devolo, Everspring, Fibaro



### Hörmann homee functions

- For iOS, Android and as a web app
- Weather with forecast
- Camera (Netatmo) can be connected
- Time, calendar and astronomical function
- Language assistants (via Alexa, Google, Siri shortcuts)
- IFTTT
- Push notifications
- Widgets

# Access control system LightAccess

- Reliable LightAccess technology (light signal) via smartphone display
- No app installation required with temporary access code
- Limited or permanent access codes easy to create with just a few clicks
- LightPass app for access management for iOS, Android and as a platform-independent web app
- Touch-to-open function\* for opening doors by touching the reader
- 12 permanent and 6 temporary access codes

■ Available from 1.3.2019



Easily manage access codes on a computer or via app on your smartphone or tablet



Send access codes (limited or permanent) by e-mail or SMS to virtually any smartphone with a colour display and web browser



Open the door by scanning the changing mobile phone colour code using the reader

\* Depends on device and app version





#### Radio finger-scan FFL 25 BS **1**

For 2 functions and up to 25 fingerprints with hinged cover

■ Available from 1.10.2019



#### Radio code switch FCT 3 BS **2**

For 3 functions, with illuminated buttons

■ Available from 1.10.2019



#### Radio code switch FCT 10 BS **3**

For 10 functions, with illuminated buttons with hinged cover

■ Available from 1.10.2019



#### Bluetooth receiver HET-BLE **4**

For operation, impulse control of garage and entrance gate operators, entrance door locks and internal door operators via the Hörmann BlueSecur app

■ Available from 1.3.2019



#### HCP2 HUB **5**

For connecting up to 3 HCP modules / up to 3 smarthome systems to an HCP interface on the operator

■ Available from 1.10.2019



ELEGANT



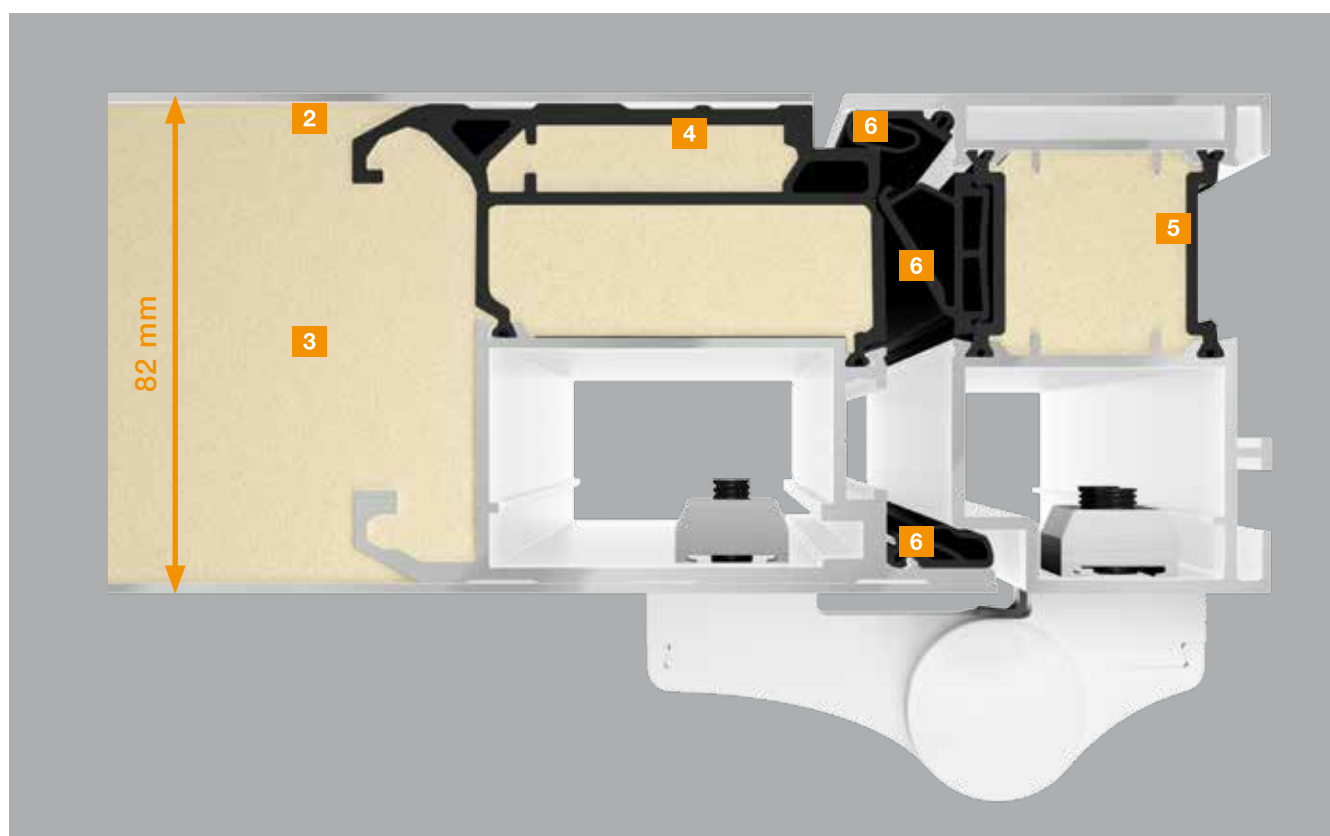
# Aluminium stainless steel entrance door ThermoPlan Hybrid

- Elegant door appearance thanks to a flush-fitting transition from door leaf to frame inside and outside **1**
- High leaf rigidity due to powder-coated exterior stainless steel sheet **2**
- High form stability, including in case of large temperature differences inside and outside
- Solid 82 mm aluminium / stainless steel door leaf with PU rigid foam infill and internal leaf profile **3**
- Aluminium leaf profile with thermal break with flush-fitting transition to the frame **4**
- 82 mm aluminium door frame with thermal break **5**
- Triple sealing with an all-round seal **6**

■ Available from 1.4.2019



As standard





## Flush-fitting transition from the door leaf to the frame



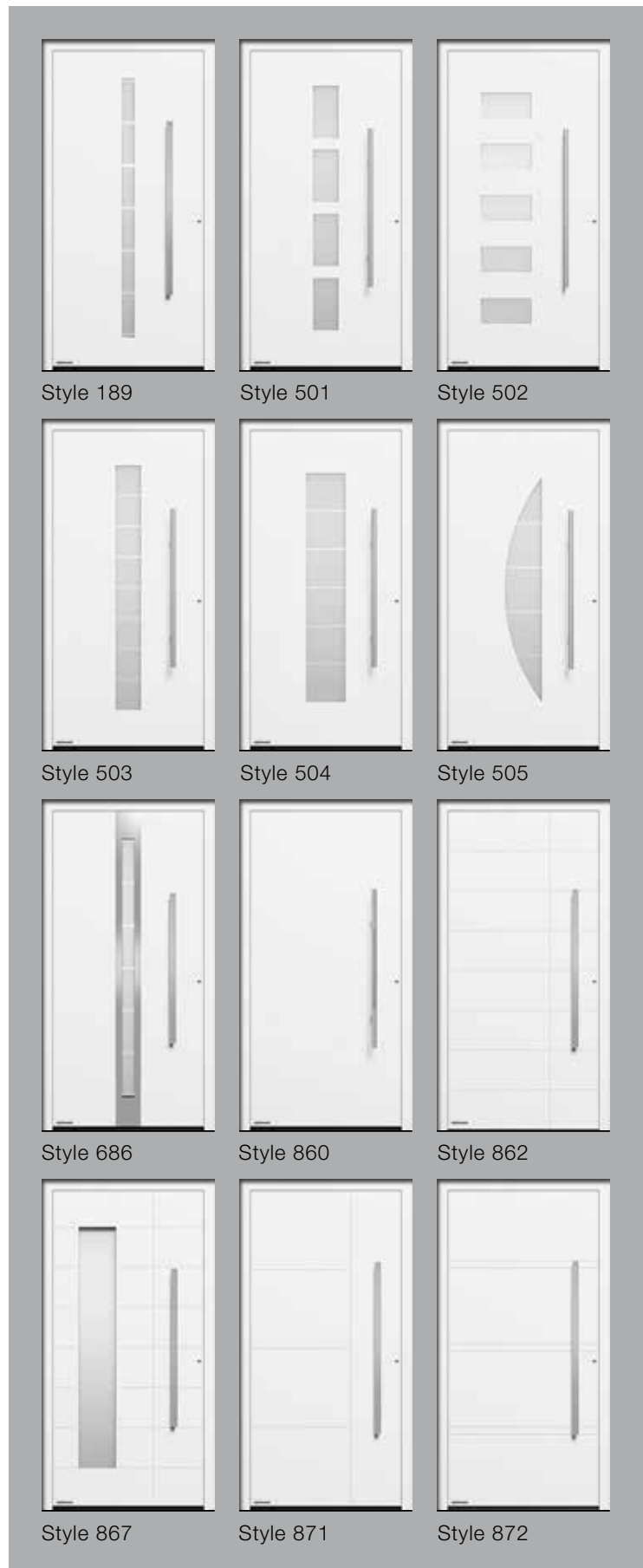
### Equipment

- Triple-pane thermal insulation glazing with safety glass on both sides **7**
- Profile cylinder protected against manipulation **8**
- RC 3 security equipment as standard with 5-point security lock **9**
- Security bolts **10**
- Fulfills all requirements of the energy saving regulation
- Suitable for fitting without thermal bridges
- $U_D$ -value up to approx.  $0.87 \text{ W}/(\text{m}^2\cdot\text{K})$
- Funding from KfW bank possible

## ENTRANCE DOORS

### Aluminium stainless steel entrance door ThermoPlan Hybrid – 12 modern door styles

- Custom door designs with 19 preferred colours or RAL to choose
- Generous entrances with side elements and transom lights as well as custom glazings
- Custom door appearances with optional exterior handles and interior levers
- More security and convenient operation with optional lock variants



# Aluminium stainless steel entrance door ThermoSafe Hybrid

- Optionally available for many ThermoSafe entrance door styles
- High leaf rigidity due to powder-coated exterior stainless steel sheet
- High form stability, including in case of large temperature differences inside and outside
- RC 4 security equipment as standard for all styles without glazing
- RC 3 security equipment as standard for all styles with glazing

■ Available from 1.4.2019



## RC 4 security equipment as standard

Perpetrator description according to DIN EN 1627: In addition to screw drivers, pliers, wedges, a crowbar and a simple drilling tool, experienced burglars also use saws and striking tools such as axes, chisels, hammers, and cordless drills.

Resistance time: 10 minutes



### Entrance door automation with the Hörmann BlueSecur app **1**

- Simple operation of the automatic lock using the Hörmann BlueSecur app (see pages 16 – 17)
- For all aluminium entrance doors ThermoCarbon, ThermoPlan Hybrid and ThermoSafe with optional automatic lock S5 / S7 Bluetooth
- For all steel / aluminium entrance doors Thermo65 with optional automatic lock with electric motor for multiple-point locking with opening via Bluetooth

■ Available from 1.4.2019

### Retractable bottom seal with weather protection **2**

- Optionally available for all ThermoSafe / ThermoSafe Hybrid entrance doors
- Doorway without threshold for completely barrier-free entrances
- Best possible seal of the door bottom edge
- Water tightness under heavy rain: 2A
- Air permeability: 1

■ Available immediately







## Door operator HDO 200 3

- Ideal solution for barrier-free entrances in combination with door versions without threshold thanks to retractable bottom seal as well as inconspicuous flatscan sensor for reliable operation
- Optionally available for aluminium entrance doors

■ Available from 1.3.2019

## Stainless steel exterior handles

- Optionally available for all ThermoCarbon, ThermoSafe and ThermoPlan Hybrid entrance doors
- Stainless steel handle HOE 706, polished with decorative centre part 4
- Stainless steel handle HOE 506, brushed 5
- Integrated finger-scan

■ Available from 1.4.2019



## Finger-scan 6

- Elegantly integrated in the door leaf
- Optionally available for all steel / aluminium entrance doors Thermo65
- Door opened by fingerprint
- For automatic lock with electric motor

■ Available from 1.3.2019







COSY

# DesignLine Concepto

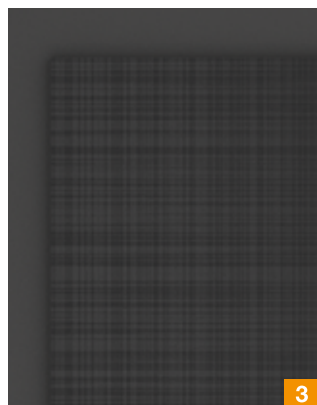
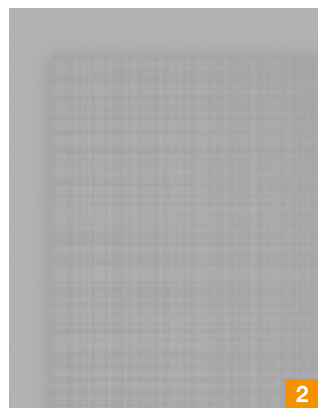
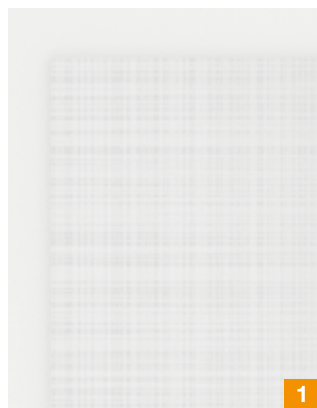
## 4 high-quality surface finishes

- Duradecor ultra matt
- Gloss (high-gloss)
- Duradecor Slate
- NEW: Duradecor Linen 1 to 4

## 4 individual colours

- Traffic white RAL 9016 1
- Light grey RAL 7035 2
- Anthracite grey RAL 7016 3
- NEW: Taupe 4

■ Available from 1.3.2019







## All-glass doors

- Designs matching DesignLine Concepto doors in surface finishes Slate and Linen
- Over 20 additional styles

■ Available from 1.3.2019



## Elegant all-glass door fitting

- Elegant flush-closing appearance
- Lever actuation not necessary
- For timber and steel frames

■ Available from 1.3.2019

### ClassicLine Montana **1**

- 8 classic models
- Optionally available with glazing cut-outs

■ Available from 1.3.2019

### ClassicLine Kontur **2**

- 8 classic models
- Optionally available with glazing cut-outs

■ Available from 1.3.2019

### Jack knife door **3**

- Space-saving access to small rooms, such as Guest cloakrooms
- Top-positioned tracks prevent losses in passage height
- No floor track for seamless floor transition
- Barrier-free living comfort for wheelchair users and people with limited mobility
- For all surface finishes and decors, including with glazing cut-outs

■ Available from 1.3.2019

### Apartment entrance door WAT Klima 3 SK1 **4**

- Climatic class 3
- Acoustic rating category 1
- 40 mm door leaf thickness

■ Available from 1.3.2019





## Duradecor texture, brushed white **5**

- White surface finish with brushed texture

■ Available from 1.3.2019

## Duradecor colour Taupe **6**

- Trendy colour with grey tint and brown nuances

■ Available from 1.3.2019

## Concealed hinges **7**

- Elegant door appearance
- Especially inexpensive version with 3D adjustment

■ Available from 1.3.2019

## Improved frame construction **8**

- Timber profile frames with minimum radius of 3 mm
- Harmonious appearance with rebated and flush-closing door leaves
- Hybrid hinge pockets made of metal and plastic
- Carrying capacity 80 kg for timber and glass doors

■ Available from 1.3.2019



# FUNCTIONAL







## Sports hall recessed handle **1**

- Emergency exit door according to DIN EN 179, approved for escape routes
- Only minimally protruding fittings
- For flush wall fitting and doors in escape routes

Steel and stainless steel construction  
project doors STS / STU

■ Available from 1.3.2019

Steel construction project doors OD

■ Available from 1.7.2019

## Concealed hinges **2**

- Premium door appearance without visible hinges

Flush-closing steel and stainless steel  
construction project doors STS 90

■ Available immediately

Flush-closing steel construction  
project doors OD

■ Available from 1.7.2019

## Adjustable lock plate **3**

- Exact latch adjustment without reworking the lock plate
- Latch scratch protection for coated doors

Optionally available for steel and stainless  
steel construction project doors STS / STU

■ Available immediately

Optionally available for steel construction  
project doors OD

■ Available from 1.7.2019



# Fire-rated external doors with CE marking

- Tested and approved external doors with fire and / or smoke protection characteristics
- Classified performance characteristics according to EN 16034 and EN 14351-1
- EI<sub>2</sub>30 aluminium tubular frame parts
- EI<sub>2</sub>30 / EI<sub>2</sub>90 fire-rated doors OD

■ Available immediately



## Concealed hinges

- Elegant door appearance
- Optionally available for T30 aluminium tubular frame construction project doors HE

■ Available from 1.7.2019

## Access control with BiSecur radio system

- Easy unlocking of door lock via hand transmitter or radio internal push button
- Optionally available for aluminium tubular frame construction project doors HE

■ Available from 1.7.2019

## Overhead door closer with flush appearance **1**

- Flush edge between slide rail and locking mechanism
- For HDC 35, TS 5000, TS 93, TS 98 XEA and TS 61 (depending on version)

■ Available from 1.3.2019

## Steel construction project doors OD **2**

T60 fire-rated door H6 OD

- Single- and double-leaf

■ Available from 1.7.2019

**EI<sub>2</sub>60** **T60** **RS**

T120 fire-rated door H12 OD

- For European fire protection requirements
- Single-leaf

■ Available from 1.7.2019

**EI<sub>2</sub>120** **T120** **RS**







### Swing door SPT MZ 3

- 62 mm door leaf, can be opened from both sides, for canteens, bars, restaurants and kitchens
- Single- and double-leaf
- Finger trap protection profile over entire leaf height (opposite hinge side)
- Manual push plate made of stainless steel V2 A as standard
- Corner frame and corner frame with counter frame
- Optionally available with rectangular or round glazing
- Galvanized steel, optionally coated in preferred colour, RAL to choose or NCS as well as in stainless steel V2 A, 1.4301, K240 circular finish or stainless steel V4 A, 1.4571

■ Available from 1.3.2019



### Steel multi-purpose door STU MZ 4

- Excellent thermal insulation with a U-value of up to 1.05 W/(m<sup>2</sup>·K)
- Ideal for use in industrial halls
- Powder-coated stainless steel surface in RAL to choose
- CE marking in accordance with EN 14351-1

■ Available from 1.3.2019



### Multi-purpose door MZ Thermo65

#### Style 021 with narrow glazing 5

- Triple-pane insulated glazing
- U-value of up to approx. 1.0 W/(m<sup>2</sup>·K)
- Synthetic glazing frame Roundstyle

■ Available from 1.7.2019

#### Approved break-in-resistance RC 2 6

- In combination with anti-panic touch bar and retractable bottom seal

■ Available from 1.7.2019

### Radio door lock operator SmartKey **1**

- Easy unlocking of door lock: via hand transmitter, radio internal push button or right on the SmartKey
- For steel construction project doors T30 H3 OD and MZ D65 OD as well as steel and stainless steel construction project doors T30 STS/STU30 and MZ STS/STU
- Suitable for on-site retrofitting

■ Available from 1.3.2019

### Glazing cut-out A9 **2**

- Dimensions: 229 × 1360 mm
- Aluminium frame
- With Satinato glazing
- For steel internal doors ZK and OIT

■ Available from 1.3.2019

### T30 Quadro **3**

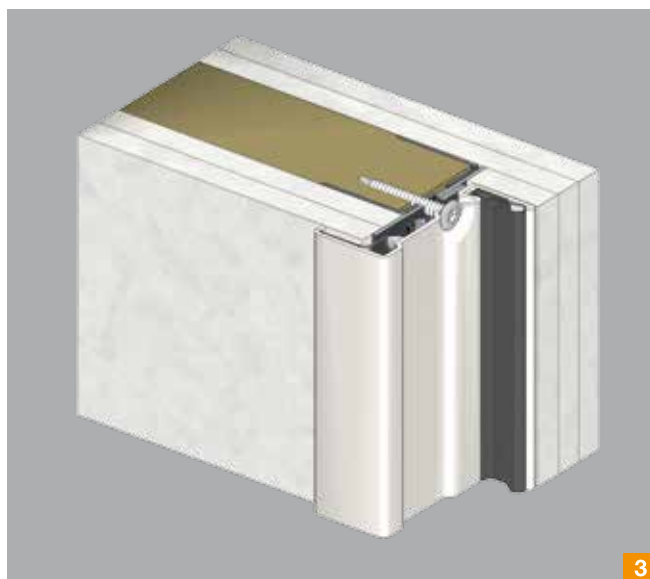
- For fitting to partition walls

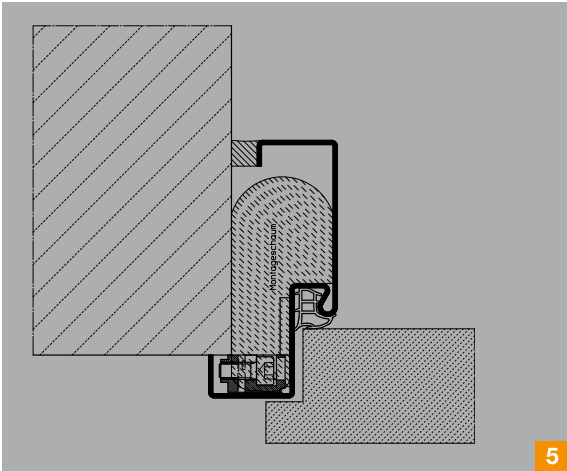
■ Available from 1.3.2019

### Renovation frame STU 30-1 for fire-rated doors H8-5 and H8-1 **4**

- Fitting over existing frame of fire-rated doors H8-5, H8-1 (BRM: 875 × 2000 mm, 1000 × 2000 mm)
- Powder-coated in Traffic white RAL 9016
- Optional door equipment: Security kit RC 2, retractable bottom seal

■ Available from 1.3.2019

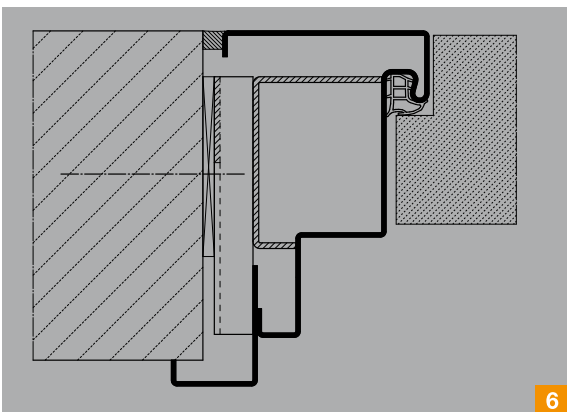




## Corner frame for retrofitting 5

- For all wall types
- Up to 50 kg door leaf weight
- Precise fitting without mortar with 2-compound fitting foam
- Door leaf can be fitted immediately
- Retrofitting for powder-coated frames

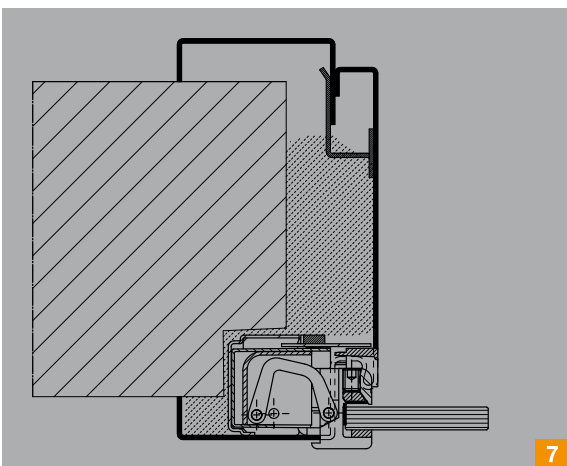
■ Available from 1.3.2019



## Sports hall frame for retrofitting 6

- Flush-fitting transition from the door leaf to the frame
- Bottom edge flush between wall and corridor from wall width 115 mm
- Double-shell with wall width adjustment  $-5 / +15$  mm

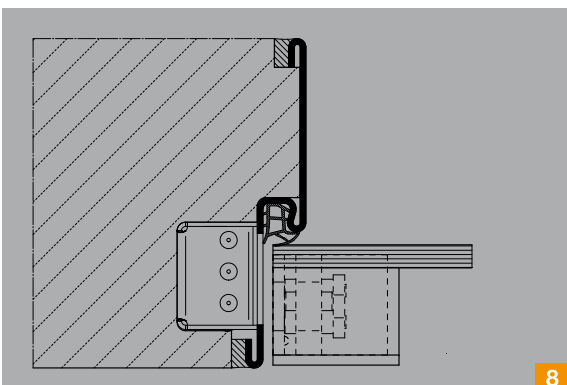
■ Available from 1.3.2019



## Steel profile frame for flush-fitting all-glass doors 7

- Virtually flush-fitting appearance of door leaf, frame and hinges
- Silent, non-contact closing through magnets
- Max. size 1000 × 2250 mm
- Up to 60 kg door leaf weight

■ Available from 1.3.2019



## Frame without face HW-SL for all-glass doors 8

- Elegant door appearance without visible frame face on the hinge side with maximum transparency
- For partition walls and solid walls
- From wall width 100 mm and rebate depth 47.5 mm
- For all-glass door leaves 8 mm / 10 mm
- Up to 80 kg door leaf weight

■ Available from 1.3.2019

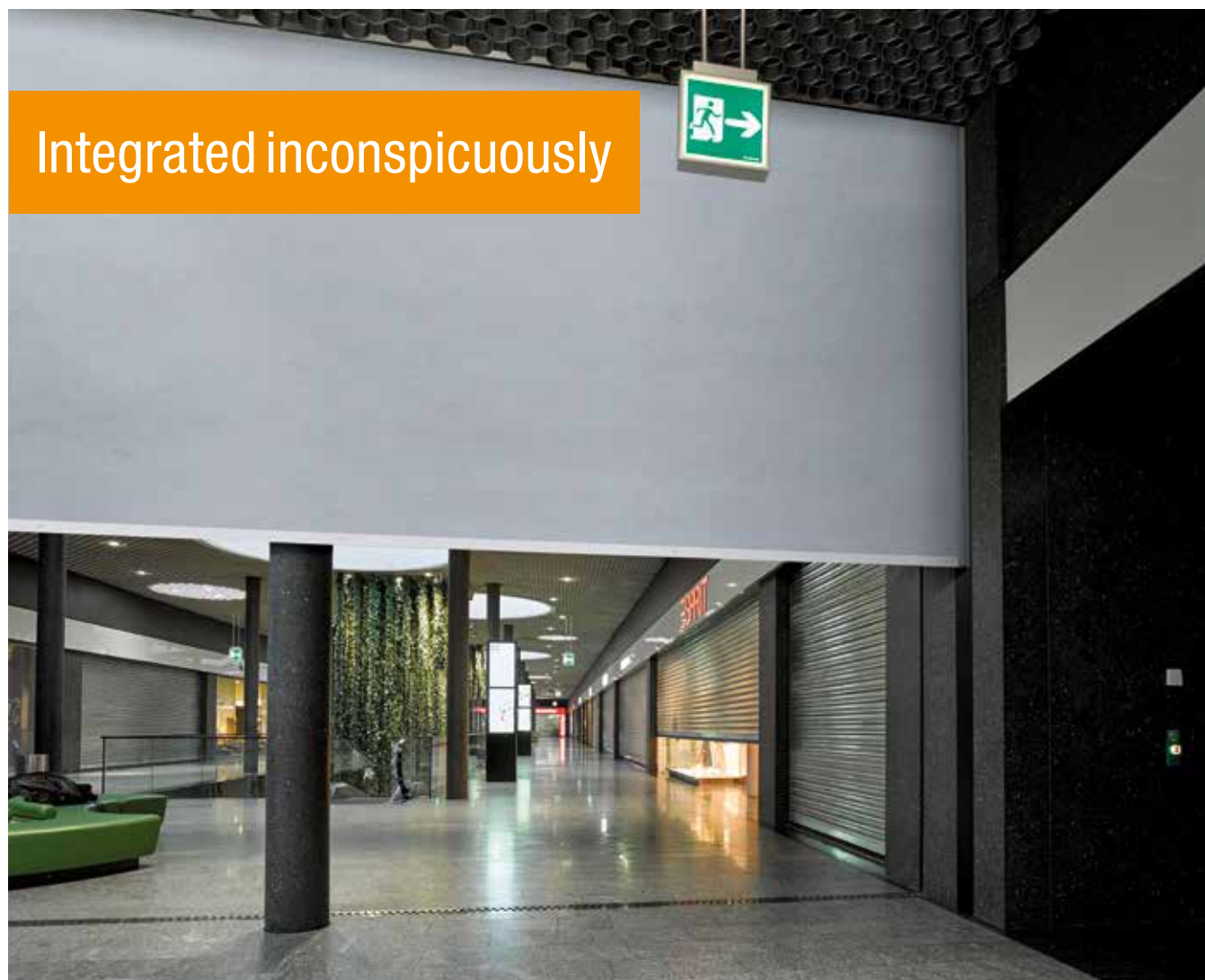
# Fire protection curtain FlexFire

- Discreet textile fire protection for construction projects and industrial buildings
- Lean design with narrow side guide
- Barrel with integrated tubular drive
- Automatic teach-in run
- Visual fire detectors monitor the door area and ensure reliable closing
- Barrel cover, side guide and closing strip primed, optionally in RAL to choose
- Fast fitting thanks to tubular drive inserted in door shaft on site, plug-in preassembled wiring as well as 2-part side guides

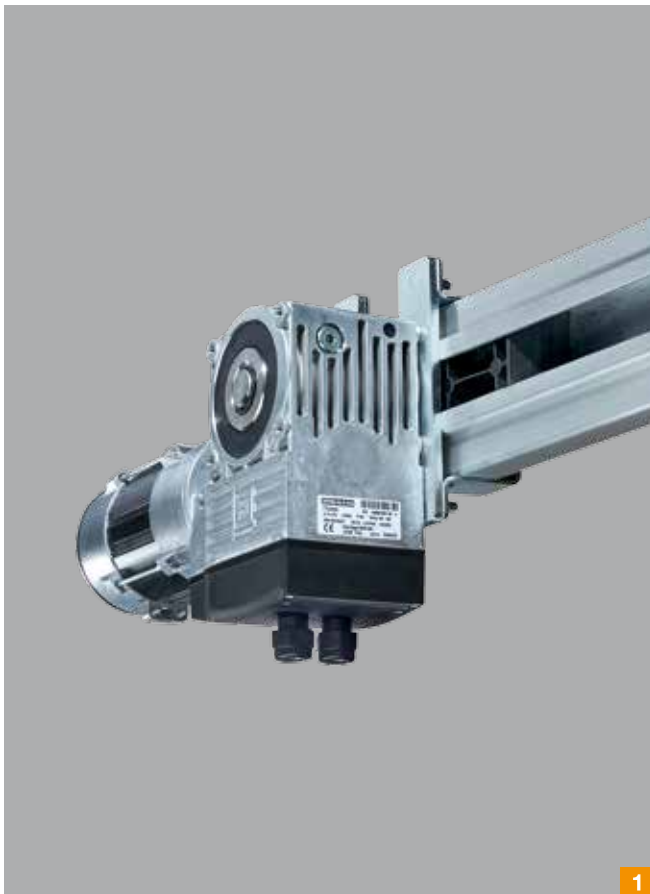
■ Available from 1.7.2019



For further information, see our Fire Protection Curtain FlexFire brochure.







## Impulse control for chain drive operator ITO 400 **1**

- Impulse operation "Open-Close"
- Sensors as main closing edge safety device
- Automatic operation via button or hand transmitter
- Optionally as FU version with control B 460 FU with soft start and soft stop

■ Available from 1.3.2019

## Wicket doors with sports hall recessed handle **2**

- Emergency exit door according to DIN EN 179, approved for escape routes
- Only minimally protruding fittings

■ Available from 1.3.2019



# Shop door ShopRoller SR 65

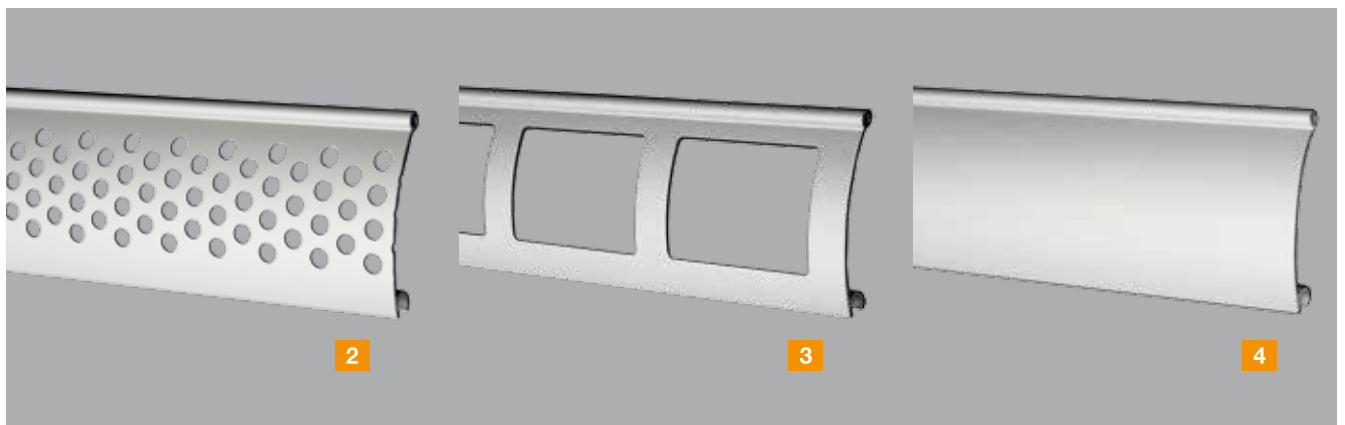
- Side guide and door curtain made of anodised aluminium **1**
- Curtain versions: 7 mm round perforation **2**, 60 × 44 mm rectangular perforation **3**, solid **4**
- Catch safety device as standard
- Operation via key switch in press-and-hold operation
- Fitting in front of, behind or alternatively in the reveal
- Sizes (clear opening): from 1000 × 800 mm to 7500 × 4500 mm
- Optional accessories: security equipment RC 2, security equipment RC 3, curtain cover made of coated sheet steel, floor locking

■ Available from 1.8.2019



Optional equipment







# EFFICIENT







A10

# SmartControl



- For all Hörmann high-speed doors (from year of manufacturer 2015) as well as for all sectional, non-protruding up-and-over and sliding doors with control 560 (available from 2020)
- Technical door analysis at all times
- Online portal with all important door information, e.g. Error messages or door cycles
- No software installation required
- Cost-savings thanks to fewer and shorter service visits
- Fast troubleshooting thanks to online access to door control
- Fewer and shorter downtimes as wearing parts can be replaced in good time
- Efficient planning of service and maintenance visits

High-speed doors

■ Available from 1.3.2019

Sectional, non-protruding up-and-over and sliding doors

■ Available from 2020



Optimal door operation  
and smooth processes

# Spiral door HS 5012 PU 42 S

- 215 mm narrow side elements enable fitting even in the tightest of spaces
- Service-friendly and virtually wear-free due to counterbalance without springs
- Max. speed: 1.2 m/s (opening), 0.5 m/s (closing)
- Max. door size: 5000 × 5000 mm

■ Available from 1.3.2019

BiSecur radio control elements for spiral high-speed doors

- Safe and convenient operation
- Extremely secure BiSecur encryption protocol
- Tested and certified by security experts at Bochum University
- Interference-resistant radio signal with a stable range

■ Available from 1.3.2019





### Angle fixing **1**

- For rolling shutters / rolling grilles SB and rolling shutters/rolling grilles TGT
- For trouble-free side guide fitting, e.g. for insulated or concealed reveal
- Ready-to-fit delivery
- For structures made of concrete or steel

■ Available from 1.3.2019



### Radio transmission unit **2**

- For rolling shutters / rolling grilles DD
- Optional equipment for transmission of signals via Bluetooth from the door curtain to the control
- No coiled cable
- Power supply via high-performance batteries
- For controls: 445 R and 460 R

■ Available immediately



### Key switch posts

- With base for fitting to the ground, optionally as concrete version
- Surface finish in White aluminium RAL 9006, post 90 x 90 mm

#### Key switch post STN 1 **3**

- To hold 1 command unit
- Height: 1100 mm

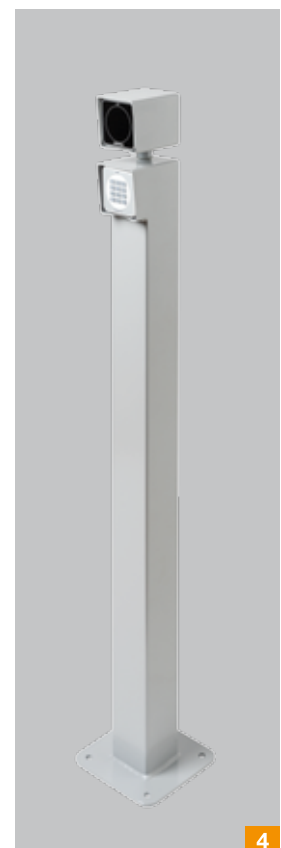
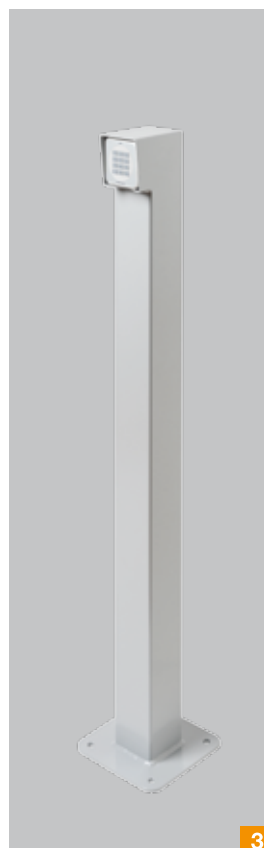
#### Key switch post STN 1-1 **4**

- With rotating attachment to hold 2 command units or 1 command unit and 1 warning light
- Height 1200 mm

For command units:

- CTR 1b-1, CTR 3b-1, CTV 3-1, CTP 3, TTR 1000-1, FL 150, STUP 50, HLA 1, double LED warning lights red / green

■ Available immediately





# World's first: air inlet control AC72

- For integrating door systems to securely supply fresh air in smoke extraction concepts
- Compliance with standard requirements for smoke extraction systems, such as monitored battery operation in case of power failure for 72 hours
- Parallel, automatic door opening to air inlet position within 60 seconds when fire alarm system is triggered

For industrial door operators

- WA 300 S4 (sectional door)
- WA 300 R S4 (rolling shutter)
- WA 300 AR S4 (rolling shutter)

■ Available from 1.10.2019



RWA smoke and heat extraction

- Smoke extraction in case of a fire
- Stable, low-smoke layer near floor (by using targeted air supply)
- To ensure escape and rescue routes

Qualified smoke extraction systems approved in accordance with 12101-2 and measured according to DIN 18232-2

- Required by building regulations (e.g. in assembly areas and industrial buildings)
- For building permits considering additional protective goals (e.g. property protection requirements by operator or insurance company)
- Support self-rescue and rescue by others
- Enable targeted fire-fighting
- Reduce after-effects of a fire (injury, property damage and environmental damage)

Protective goals

- Support fire brigades in fire-fighting
- Personal safety
- Smoke extraction for escape and rescue routes
- Protection of production systems
- Protection of goods and raw materials
- Protection of building

### Industrial operators WA500FU

- For industrial sectional doors
- Opening speed up to 1 m/s
- Uniform door travel speed, even with track application H/V, thanks to speed control
- Also available as ITO 500 FU and STA 500 FU for use on non-protruding up-and-over and sliding doors

■ Available from 2020

### Control 560

- 4 × 7-segment display
- Integrated timer functions
- Illuminated keyboard
- Option relay as standard
- HCP bus (for connecting e.g. SmartControl gateway, KNX gateway etc.)
- BlueControl: initial start-up, service and maintenance work via smartphone app
- SmartControl (optional): Fewer and shorter service visits as well as fast troubleshooting thanks to online access
- Compatible with WA 500 FU, WA 500, ITO 500 FU, STA 500 FU

■ Available from 2020





## Docking assistant DAP 1

- Reliable vehicle recognition for fast, safe docking as well as protection against collision damage
- Door release for docked lorries and release for onward travel after door closes
- Heavy-duty arm with one or two photocells
- Adjustable switching range
- Optional LED warning light mounted right on the arm
- Suitable for all loading points
- Can be connected to an external warning light or an inflatable dock seal for automatic on / off

■ Available immediately

## Additional possibilities with control MWBC 2

- Combination with wheel-blocking system MWB or wheel chock with sensor WSPG in one control unit
- Status messages in the building via LED lights (red / green) on the control
- Connection of a signal horn for acoustic warnings in case of malfunctions or lack of MWB or WSPG contact

■ Available immediately



# Certified loading houses

- CE-compliant overall construction resistant to working stresses in accordance with the requirements of the Construction Products Regulation
- Lean design inside and outside
- Designed for roof load bearing capacities up to 1 kN/m<sup>2</sup> or 3 kN/m<sup>2</sup> as standard
- Suitable for wind loads up to 0.65 kN/m<sup>2</sup>
- Certified compliance with the requirements of EN 1090, such as factory production monitoring, durability and measurement according to Eurocode
- Declaration of Performance available online





# Dock seal BBS for small transport vehicles or delivery vans

- Cushion dock seal for small transport vehicles, e.g. for parcel delivery services
- Foam-filled cushions for optimum sealing
- For Mercedes Sprinter and VW Crafter with high roof
- For other vehicle series on request







SAFE



# Automatic barrier SH 300

- As flat boom, articulated arm or round boom version
- Integrated control with connections for induction loops and ID card reader
- Planetary transmission prevents damage to the barriers in case of illegal barrier boom manipulation
- Intelligent impact protection stops the barrier from closing in the presence of obstacles
- Max. barrier width 3750 mm
- Opening / closing phase 2.4 s
- Up to 5000 cycles/day

■ Available from 1.3.2019

24 V motor with control integrated  
in the barrier housing







## Individual control and management concepts **1**

- Barriers operated using mobile or stationary control elements and ID media, such as QR code cards, RFID stickers or number-plate recognition
- Individual barrier control based on customer request
- Integration into existing facility management systems as well as fire alarm systems
- ID card management system developed in-house for flexible entry and exit control

■ Available from 1.3.2019



## Control and administration via web server **2**

- Connection to a web server
- Operation and administration of the barrier system and the ID card management system
- Can be operated on any device worldwide, such as smartphones, tablets or computers
- Easy-to-use web interface
- Automatic malfunction indicator and forwarding via e-mail

■ Available from 1.3.2019



## Service-friendly components **3**

- Control unit integrated directly into the barrier housing
- Individual components have a modular design for easy fitting / exchange
- Simple integration of additional extensions, e.g. Module for ID card management system
- Easy maintenance and service

■ Available from 1.3.2019



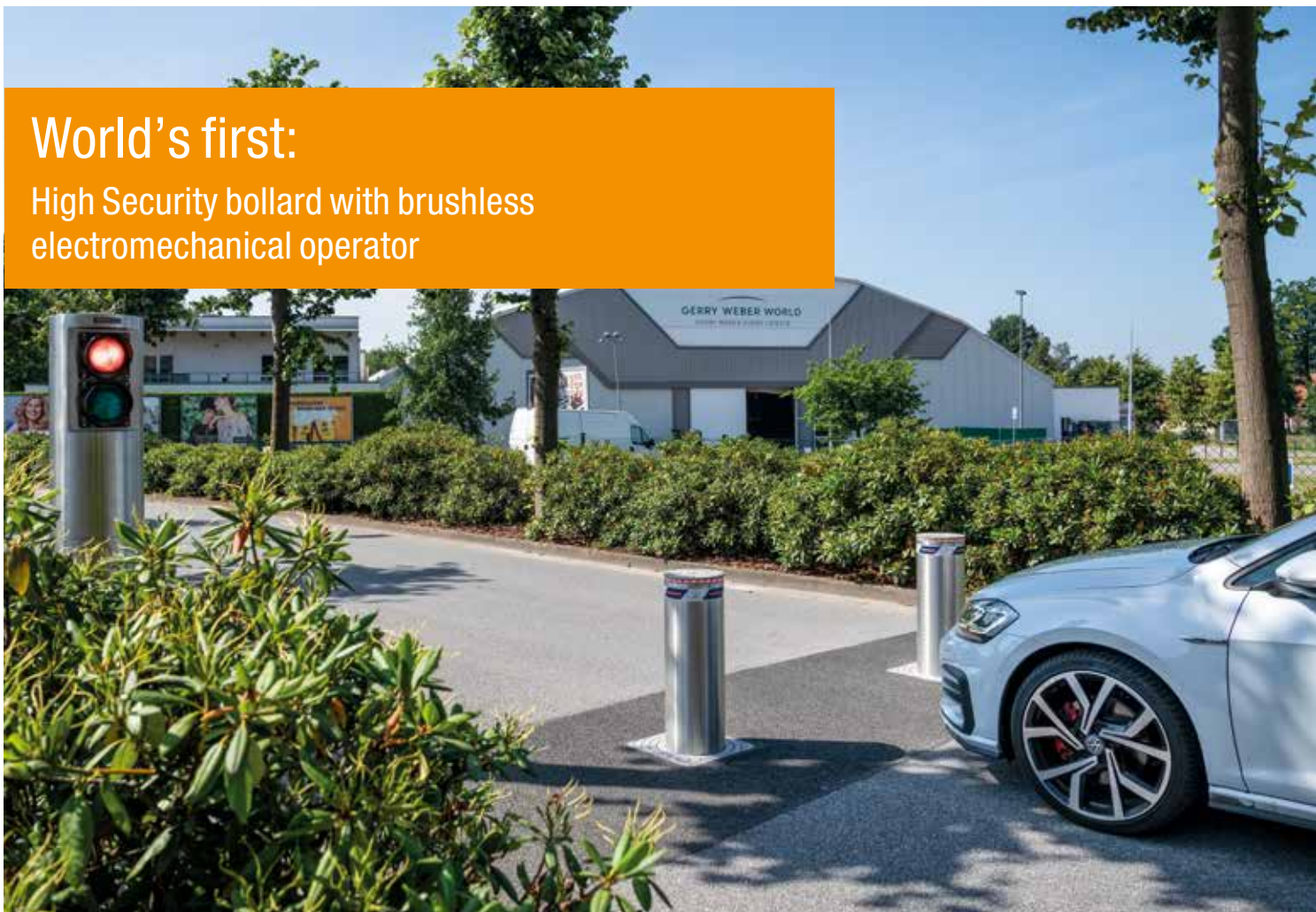
For further information, see our Perimeter Protection Systems brochure.

# High Security bollard with integrated electromechanical operator

- Low maintenance, as no inspection of the hydraulics components, oil pressure and oil level is required
- Environmentally friendly, can also be used in case of strict environmental requirements
- Service-friendly thanks to virtually wear-free brushless 24 V DC motors and few operator components
- Gentle cylinder movement with soft start and soft stop
- Available with and without EFO emergency function (emergency fast operation)
- For very frequent use of up to 2000 cycles/day

**World's first:**

High Security bollard with brushless electromechanical operator



## Automatic High Security bollards

	A 275-M30-900 E	A 275-M30-1200 E	A 275-M50-900 E	A 275-M50-1200 E	A 275-800 E
Version	Automatic	Automatic	Automatic	Automatic	Automatic
Crash test	M30 rating	M30 rating	M50 rating	M50 rating	
Diameter	273 mm	271 mm	271 mm	271 mm	273 mm
Height	900 mm	1200 mm	900 mm	1200 mm	800 mm
Speed, lifting	20 cm/s	20 cm/s	20 cm/s	20 cm/s	12 cm/s
Speed, lowering	20 cm/s	20 cm/s	20 cm/s	20 cm/s	12 cm/s
Automatic lowering in case of power failure	● (battery powered)	● (battery powered)	● (battery powered)	● (battery powered)	● (battery powered)
EFO emergency function	○	○	○	○	
Automatic safety cut-out					●
Electromechanical operator	●	●	●	●	●
Cycles (approx. per day)	2000	2000	2000	2000	100
Overall cycles (max. service life)	3000000	3000000	3000000	3000000	200000
Impact energy with destruction	750000 J	1200000 J	2000000 J	2000000 J	150000 J
Impact energy without destruction	250000 J	700000 J	700000 J	700000 J	20000 J
Available	1.4.2019	1.8.2019	1.4.2019	1.8.2019	1.3.2019

## Certifications for fixed High Security bollards

	F 275-M30-900 FF	F 275-M30-1200 FF	F 275-M50-900 FF	F 275-M50-1200 FF
Version	Fixed	Fixed	Fixed	Fixed
Crash test	M30 rating	M30 rating	M50 rating	M50 rating
Diameter	273 mm	271 mm	271 mm	273 mm
Height	900 mm	1200 mm	900 mm	1200 mm
Impact energy with destruction	750000 J	1200000 J	2000000 J	2000000 J
Impact energy without destruction	250000 J	700000 J	700000 J	700000 J

● = Standard equipment  
○ = Optional equipment









DIGITAL

# Architects program

- New user-friendly interface with option to filter by construction project type
- 2nd filter level for faster product selection
- New category “Service” with texts for invitation of tenders for product inspection and maintenance
- More structured selection of drawing formats
- BIM models from all product areas for Revit and Archicad

■ Available from 1.3.2019

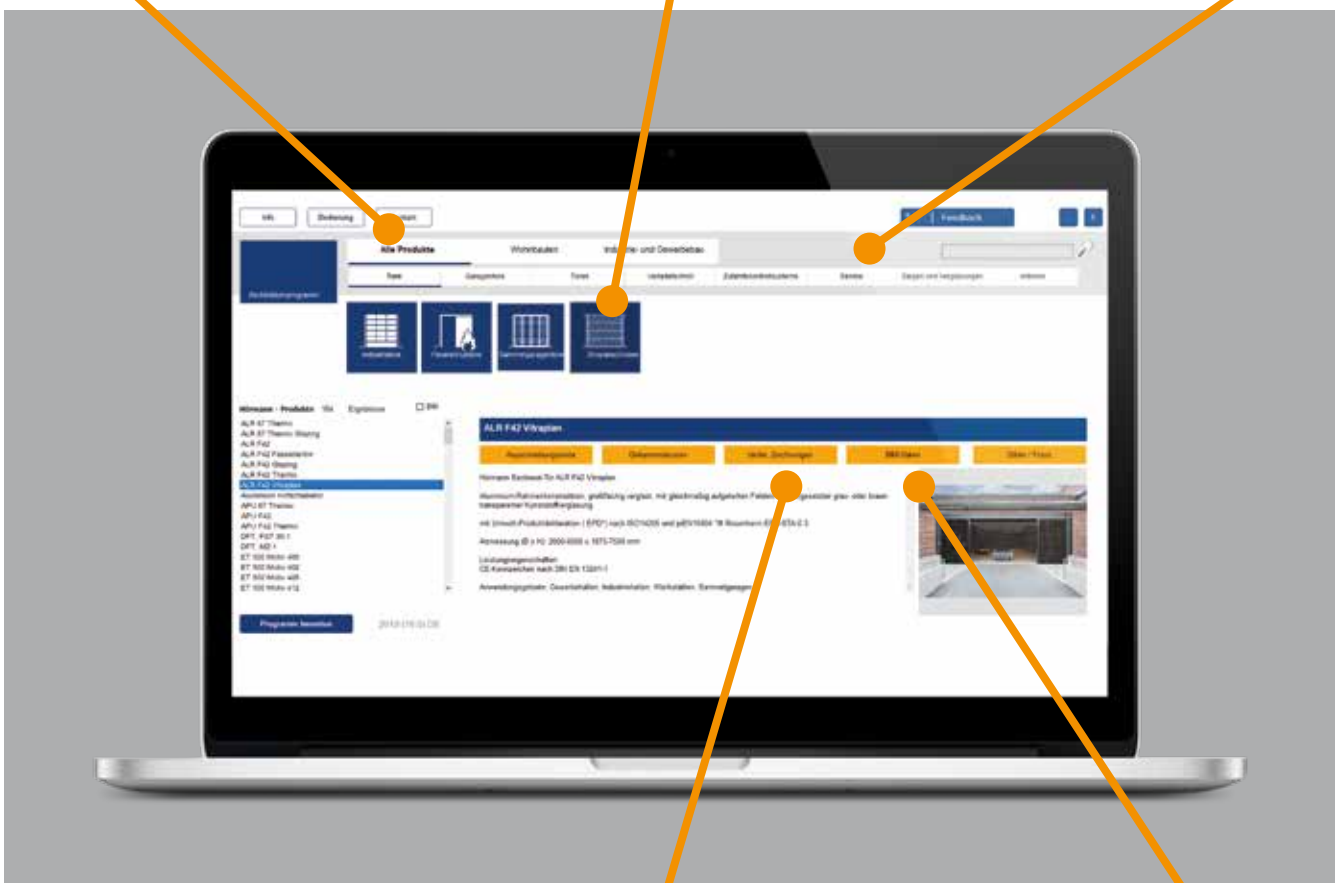




Selecting “Residential construction” or “Construction projects” automatically displays the corresponding products.

After selecting the product group, the individual products of this group are shown.

The “Service” menu item contains texts for invitation of tenders for product inspection and maintenance.



By selecting the desired format (PDF or DWG) in advance, only the drawings available in this format are shown.

Multiple or group selection downloads all drawings in a single ZIP file for ease of use.

Clicking the “BIM” button downloads the models directly.

For further information, see page 70.

# BIM models

- For efficient planning, realisation and management of buildings
- Easy integration into CAD programs Revit and Archicad
- Parameterisable models for custom use in building models (e.g. custom sizes including all parameters depending on the dimensions, such as distance back of doors or division dimensions for double-leaf doors)
- Always up-to-date thanks to continual data administration
- In 7 languages (DE, EN, FR, ES, RU, IT, HU)
- Direct e-mail support via [bim@hoermann.de](mailto:bim@hoermann.de)

■ Available from 1.3.2019



We are a member of the professional association for digital building products in the Federal Association of Building Systems e.V.





## Internet-based quotation and order system iHAAS 1

### New functions

- Convenient option to save articles and use them for quotes
- Custom settings / permissions per user
- Important free text information can be passed on for downstream processes
- Simple free text / article search as an input assistant
- Precise customer-individual price information thanks to real-time online querying of prices and conditions from the customer master data per quote

■ Available from 1.3.2019



## Door configurator 2

- Configuration of up-and-over garage doors, sectional garage doors, entrance doors and residential doors 3
- Custom-configured Hörmann products in just a few clicks
- Including recommended retail price

■ Online at [www.hoermann.co.uk](http://www.hoermann.co.uk)





# Hörmann: Quality without Compromise



Hörmann KG Amshausen, Germany



Hörmann KG Antriebstechnik, Germany



Hörmann KG Brandis, Germany



Hörmann KG Brockhagen, Germany



Hörmann KG Dissen, Germany



Hörmann KG Eckelhausen, Germany



Hörmann KG Freisen, Germany



Hörmann KG Ichtershausen, Germany



Hörmann KG Werne, Germany



Hörmann Alkmaar B.V., Netherlands



Hörmann Legnica Sp. z o.o., Poland



Hörmann Beijing, China



Hörmann Tianjin, China



Hörmann LLC, Montgomery IL, USA



Hörmann Flexon LLC, Burgettstown PA, USA



Shakti Hörmann Pvt. Ltd., India

Hörmann is the only manufacturer worldwide that offers you a complete range of all major building products from one source. We manufacture in highly-specialised factories using the latest production technologies. The close-meshed network of sales and service companies throughout Europe, and activities in the USA and Asia, make Hörmann your strong partner for first-class building products, offering “Quality without Compromise”.

**GARAGE DOORS**  
**OPERATORS**  
**INDUSTRIAL DOORS**  
**LOADING EQUIPMENT**  
**HINGED DOORS**  
**DOOR FRAMES**